

The background of the slide is a photograph of the Lawrence Berkeley National Laboratory's main building, a large circular structure with a brown tiled roof and a green copper-clad dome. The building is situated in a valley, with the San Francisco Bay and the city skyline visible in the background. The Golden Gate Bridge is prominent on the right side of the image. The sky is clear and blue.

Lawrence Berkeley National Laboratory

Lab Briefing

Michael Witherell
Laboratory Director

March 13, 2017

The Berkeley Community Advisory Group

The DOE Missions are Vital to the Nation

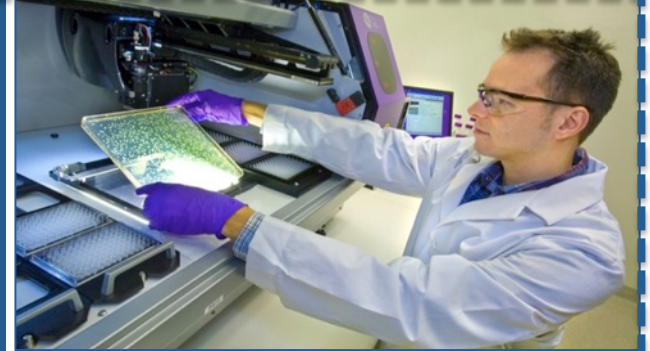
ENERGY



Enable breakthroughs to make an "all-of-the-above" energy strategy work for the nation, the world, and global climate

**Berkeley Lab's Role:
Discovery Science
Connected to Energy
& Environment**

SCIENCE



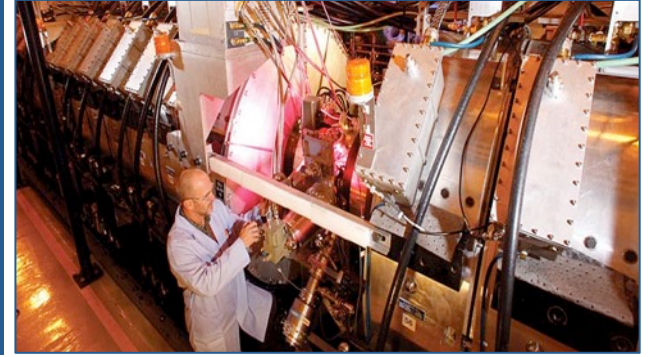
Create the knowledge and understanding that will underpin our future society...

ENVIRONMENT



\$5B/yr for massive clean-up projects growing:
How to improve results while budget constrained?

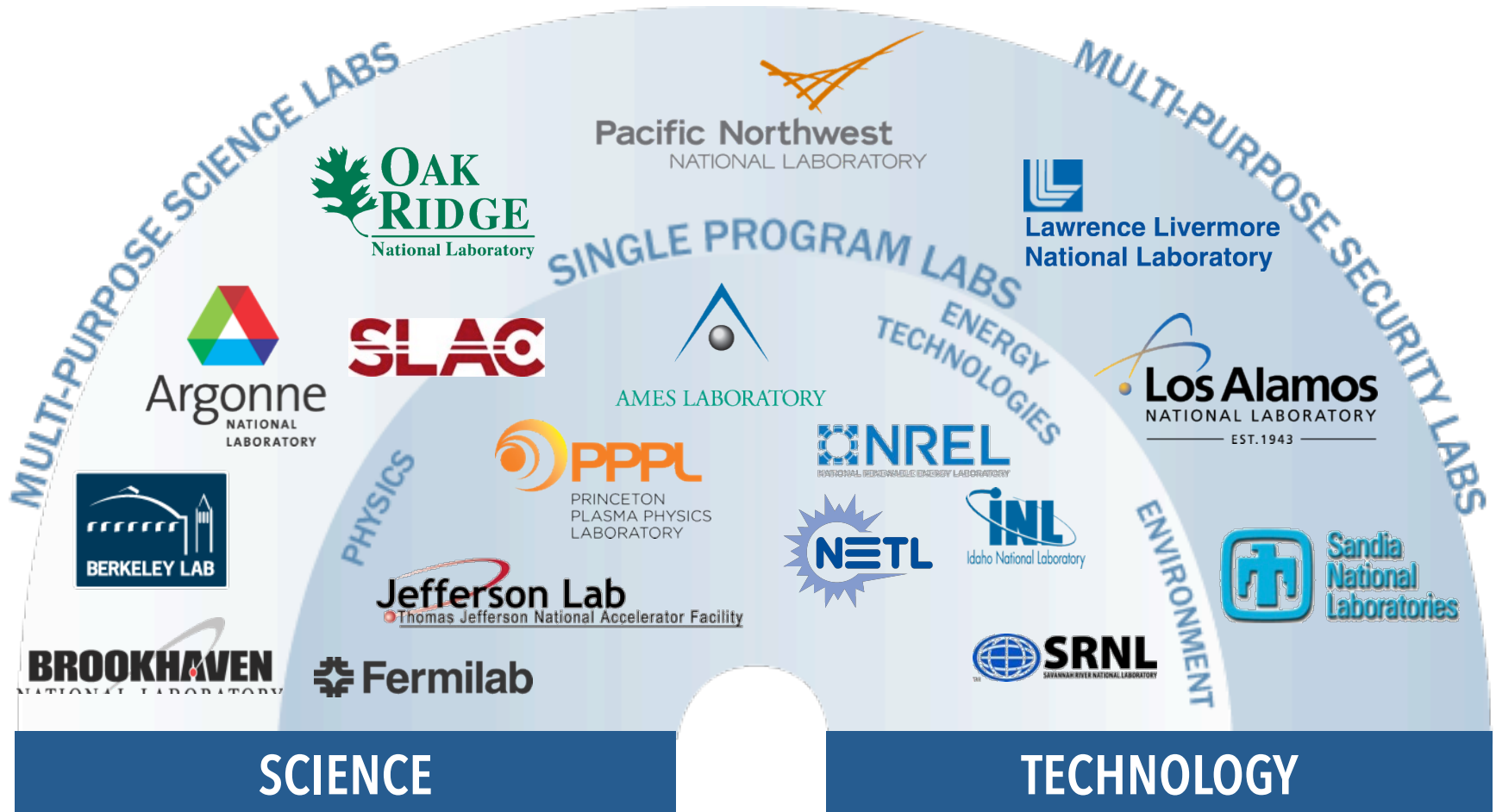
SECURITY



Science and technology foundation for nuclear and global security

The National Labs are the primary vehicle for accomplishing these missions

DOE Executes its Missions through a Network of Diverse National Labs



Lawrence's Successful Legacy of Team Science



Radiation Lab staff on the magnet yoke for the 60-in cyclotron, 1938, including:

E. O. Lawrence
Edwin McMillan
Luis Alvarez
J. Robert Oppenheimer
Robert R. Wilson

Berkeley Lab: Open, Integrated, Sharing

UNIVERSITY
OF
CALIFORNIA



Most productive
integration with a
major research
university

245

JOINT FACULTY

476

POST DOCS

330

GRAD STUDENTS

149

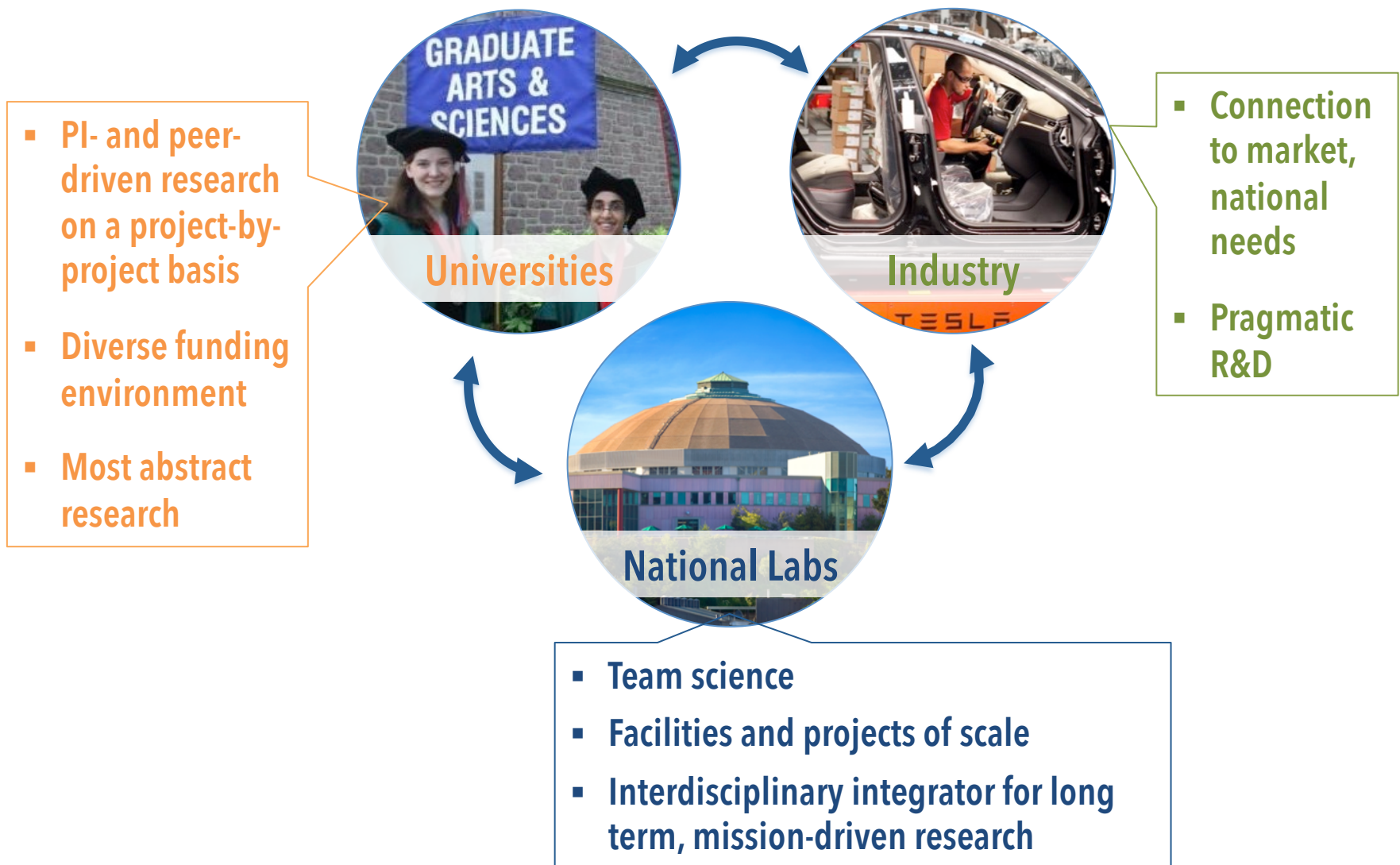
UNDERGRADS

Each year, Berkeley Lab
serves ~10,000 members of
the U.S. and international
scientific community



Public service has been part of our DNA for more than 80 years

University–National Labs–Industry Nexus



Secretary Rick Perry



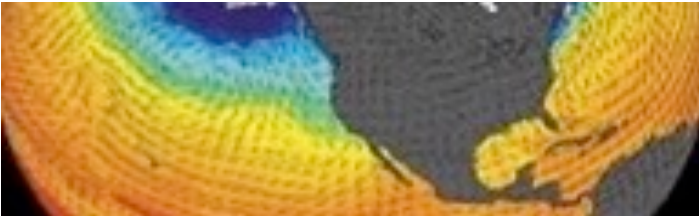
U.S. DEPARTMENT OF
ENERGY

Lab-wide Strategic Priorities & Initiatives for 2017

PRIORITIES



ADVANCED LIGHT SOURCE UPGRADE



EXASCALE FOR SCIENCE



BIOCAMPUS CAMPAIGN



INFRASTRUCTURE RENEWAL

INITIATIVES

Next Generation of Scientists

Advanced Biogenic Chemicals
and Materials

Electron Microscopy

Water-Energy Nexus

Beyond Moore's Law

Data Analytics for Science

Providing Ongoing Value to the State of California



Providing Ongoing Value to the State of California

Aliso Canyon Leak Resolution

CEC EPIC Projects & Geothermal Projects

Biofuels and bio-based chemicals

Energy Efficiency in Buildings

Water-Energy Resiliency

Many potential benefits of pioneering science to agriculture

Training the next generation of scientists

Maintaining our close partnership with the City of Berkeley



Berkeley Mayor Jesse Arreguin
speaks at the IGB
groundbreaking ceremony



Completion of the Integrative Genomics Building: 2019

Thank You